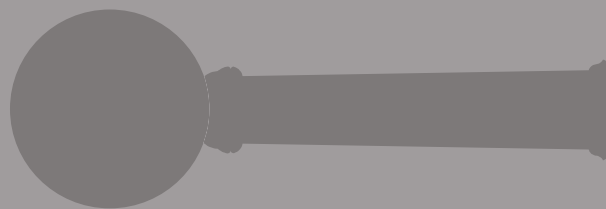


Spectra Finishes

Our ironmongery is available in a kaleidoscope of decorative finishes from our Spectra range.





Spectra Finishes

Comprising; Spectra Colour, Spectra Tone and Spectra Tech. Whatever the palette and design theme of your project, our extensive selection of colours and finishes will offer many possibilities to stimulate your ideas.

We have also created Spectra Living, an opulent collection of living finishes designed to patinate over time. Spectra Living is available exclusively for our Continental range.



Spectra Colour

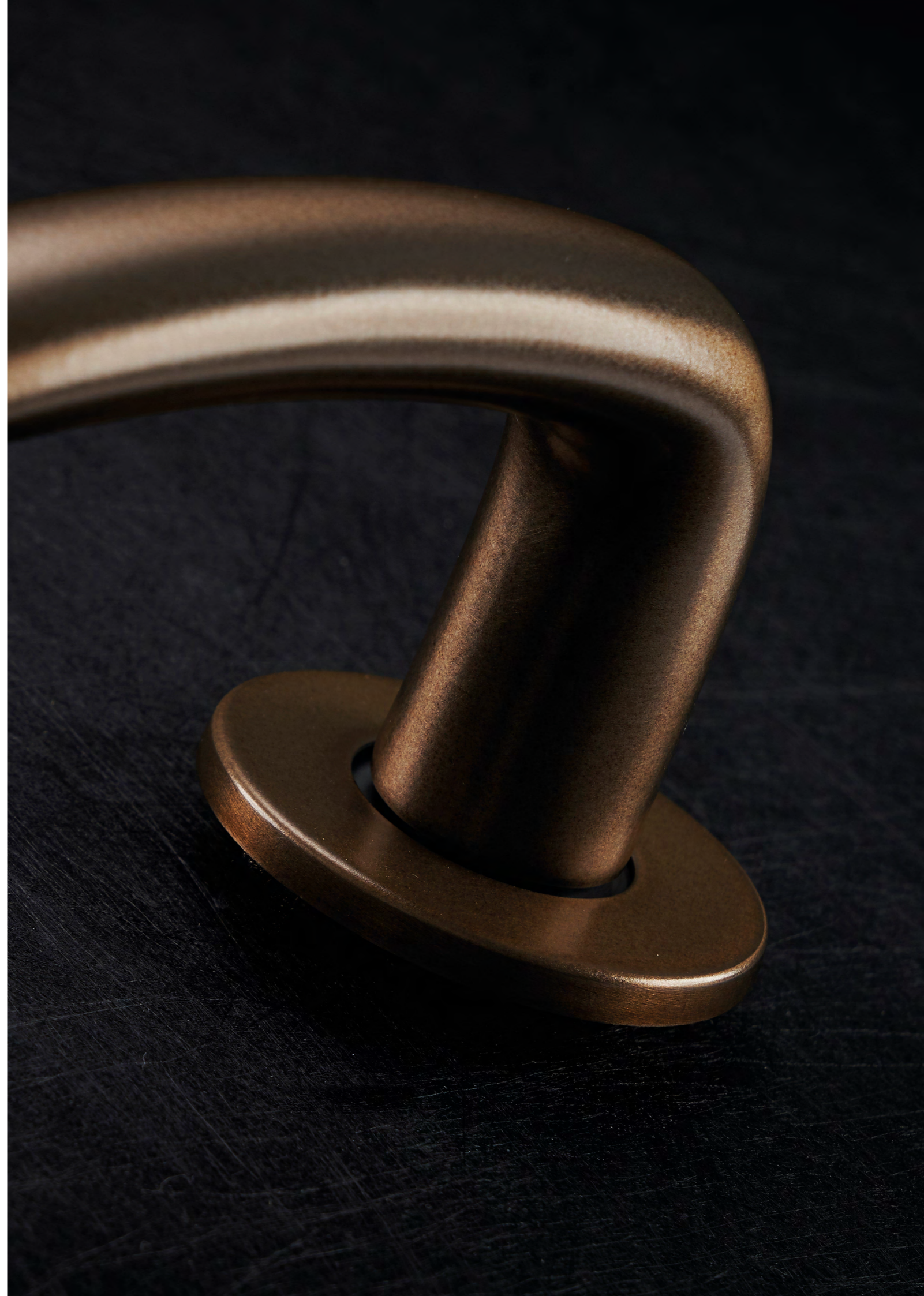
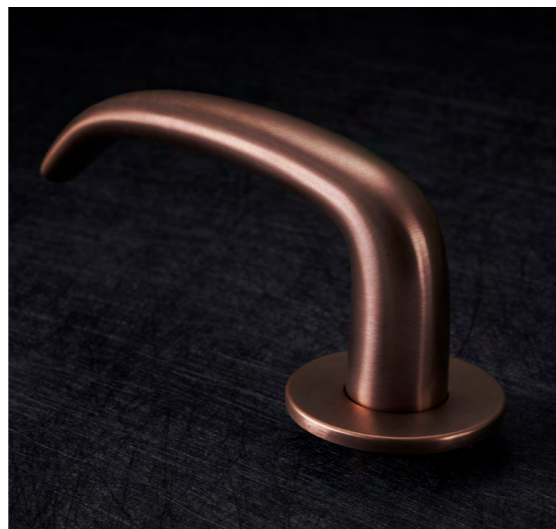
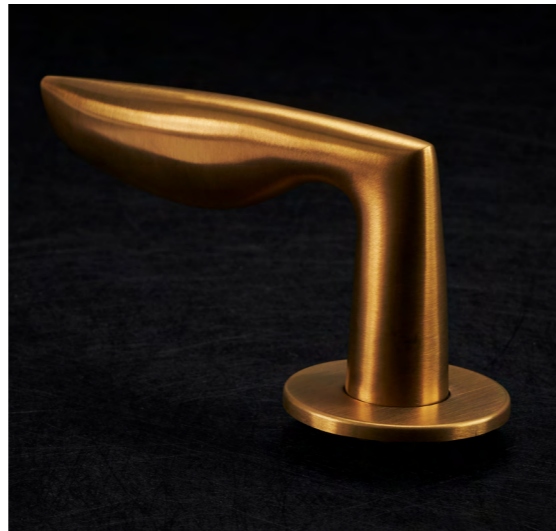
Spectra Colour is our powder coating option, available in any RAL colour such as blacks (RAL 9005, 9004) and is suitable for internal and external applications. This uses an electrostatic polyester powder coating process for solid non-transparent colours and is available on a wide range of tactile ironmongery and hardware.

Spectra Tech

Spectra Tech is our premium PVD vacuum coating process. This results in a superior decorative finish in a range of metallic colours, in both matt and gloss; a hard-wearing, scratch-resistant solution, with excellent durability that will not fade and retains the touch and feel of steel. Incredibly thin – just 1/50th the width of a human hair – a product finished with our Spectra Tech process will not need lacquer and is tarnish and corrosion resistant, due to the resilience of the finish and the quality of the products as we only use the highest quality stainless steel.

Spectra Tone

Spectra Tone applies a simulated metal finish through an electrophoretic process for those projects where satin brass, gold, black or bronze is required. This coating can be lacquered and coloured with metallic dye solutions, including our distinctive BF bronze finish, to give colour, texture and improved durability.





Spectra Living

A range of beautiful living finishes designed to age gracefully.

Curated for the Continental collection, Spectra Living adds a new dimension to the solid brass range including matt, lacquered, waxed and oil rubbed hand-finished patinas. Each only grows more stunning over time as daily use brings out subtle tones of brass and bronze to perfectly complement the timeless designs.

- Oil patina bronze
- Black bronze
- Regal bronze
- Satin burnished brass
- Patinating polished brass



Spectra Tone for Continental

Two new Spectra Tone options for the Continental range; pearl lustre or hand polished nickel. When applied to brass these two finishes offer a luxurious warmth with hints of brass or a high shine with a reassuring depth.

- Pearl lustre nickel
- Hand polished nickel



Taking care of your Spectra finish

Spectra Colour, Tech and Tone

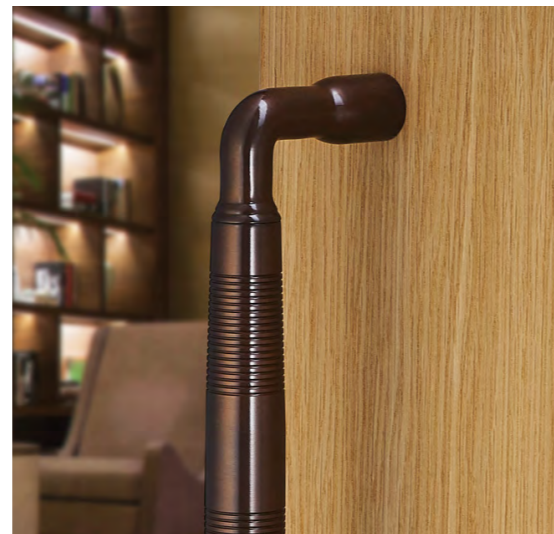
Wipe clean with a solution of washing up liquid using a soft cloth or sponge, then rinse and dry with a dry soft cloth or kitchen roll. It is advised not to use solvent based chemicals, strong acids, alkalis or abrasive cleaning materials. If a softer metal such as a ring or key marks the surface, it is most likely the soft metal has been left on the coated surface; in this case use a soft cloth and general household cleaner to remove the soft metal deposit.

Spectra Living

Spectra Living finishes are decorative and specifically designed to patinate over time. Normal use and exposure to the environment will bring out the metal below the finish for a beautiful aged aesthetic.

The living collection comprises lacquered, unlacquered and oil rubbed finishes, all of which can be cleaned with warm, soapy water and a soft cloth. The use of solvents, cleaning chemicals or abrasive products is not advised and will result in damage to the finish.

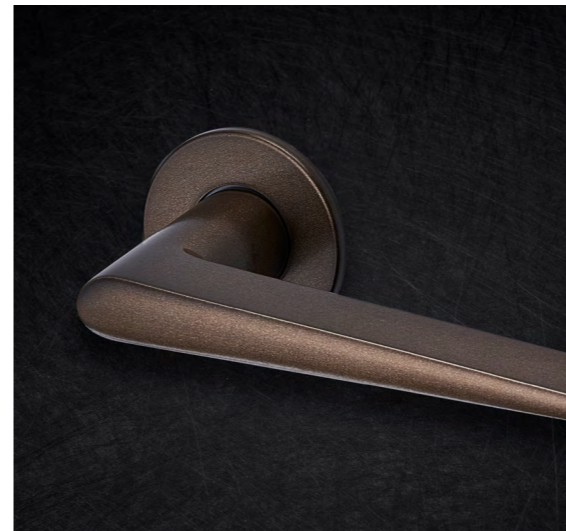
For lacquered and oil rubbed ironmongery, an occasional rub down with a quality beeswax polish is advised. For unlacquered options, we suggest a metal polish such as Brasso.





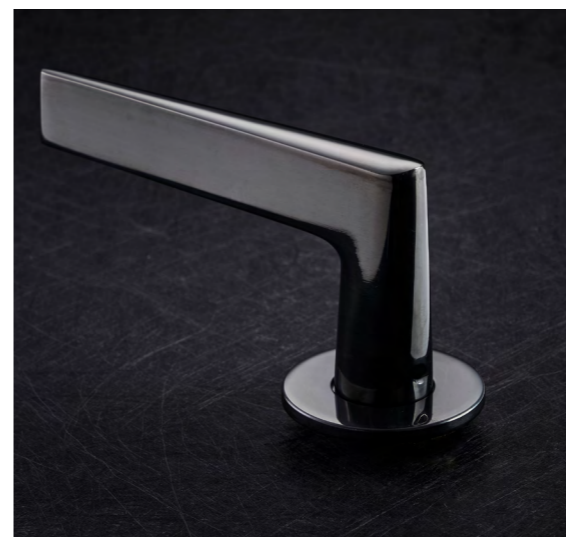
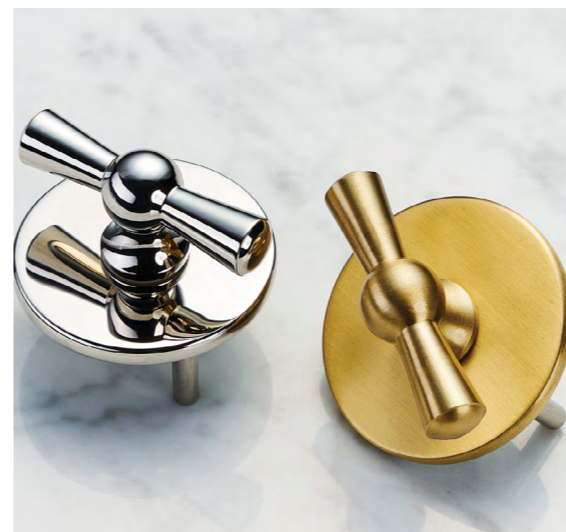
Dimensional tolerances of coated products

Please note, by applying Spectra finishes that dimensional tolerances and overall dimensions are subject to variability; this is dependent on the choice of finish and the substrate material. In such cases, we recommend that morticing samples are used in place of dimensional drawings when preparing doors.



Spectra finishes across the Allgood range of products

Our Spectra finishes are available on a wide range of our ironmongery products. Ask your Allgood specification consultant which finish best suits which products, or email info@allgood.co.uk with your query, or download the full list of Allgood products and the specific finishes that can be applied here.





Available from :

modric Inc.

National Headquarters North America
Boulder
Colorado CO 80302

E: support@modric.net